

BUSINESS PROFILE OF ELECTROMECH SOLUTIONS





ELECTROMECH SOLUTIONS

Gives you a greener product that reflects innovation

ABOUT THE COMPANY

ELECTROMECH Solutions has grown to become one of the most preferred privately-owned engineering firm by Supplying & manufacturing superior, innovative, customer specific products and services.

Our engineering and technical expertise combined with exceptional qualities and continuous focus on customer satisfaction put us at the forefront of

- Heating,
- Cooling,
- Power &
- Water Treatment business sector in Bangladesh providing turnkey solutions for Industrial Chillers, Cooling Towers, Heat Transfer and Boiler Systems. .

“INNOVATION DISTINGUISHES BETWEEN A LEADER AND A FOLLOWER.”

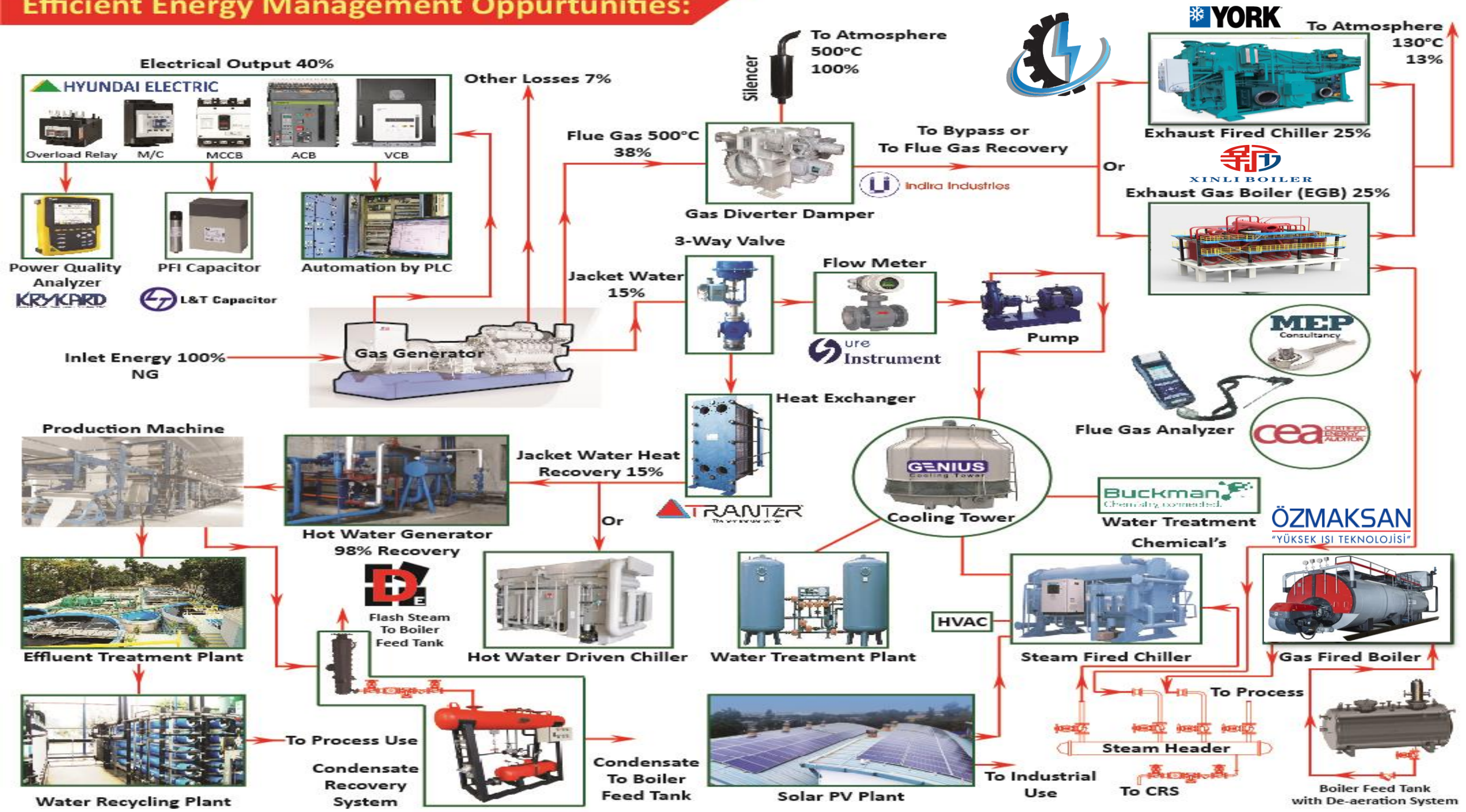
Our Company Mission

To be known and respected for providing the best, most cost-effective energy consulting services and tools in the industry. We are a firm believer in GROWTH. We help our clients grow their skills and capacities as they, in turn, eliminate energy and water waste. At the same time, we grow our employees' skills so that they can achieve whatever dreams they hold.

Our Company Vision

Our resources are finite, and wasting them is short-sighted, expensive and ultimately detrimental to all of us on the planet. Through our energy assessments, trainings, software tools, and daily interactions with the outside world, we provide guidance to others so that they can reduce energy waste & can be cost-effective Industrial Operations at their facilities. This is our calling, and it makes achieving a sustainable environment a cornerstone of all we do.

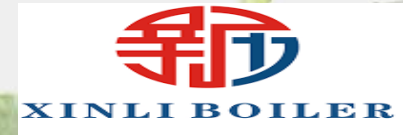
Efficient Energy Management Oppurtunities:

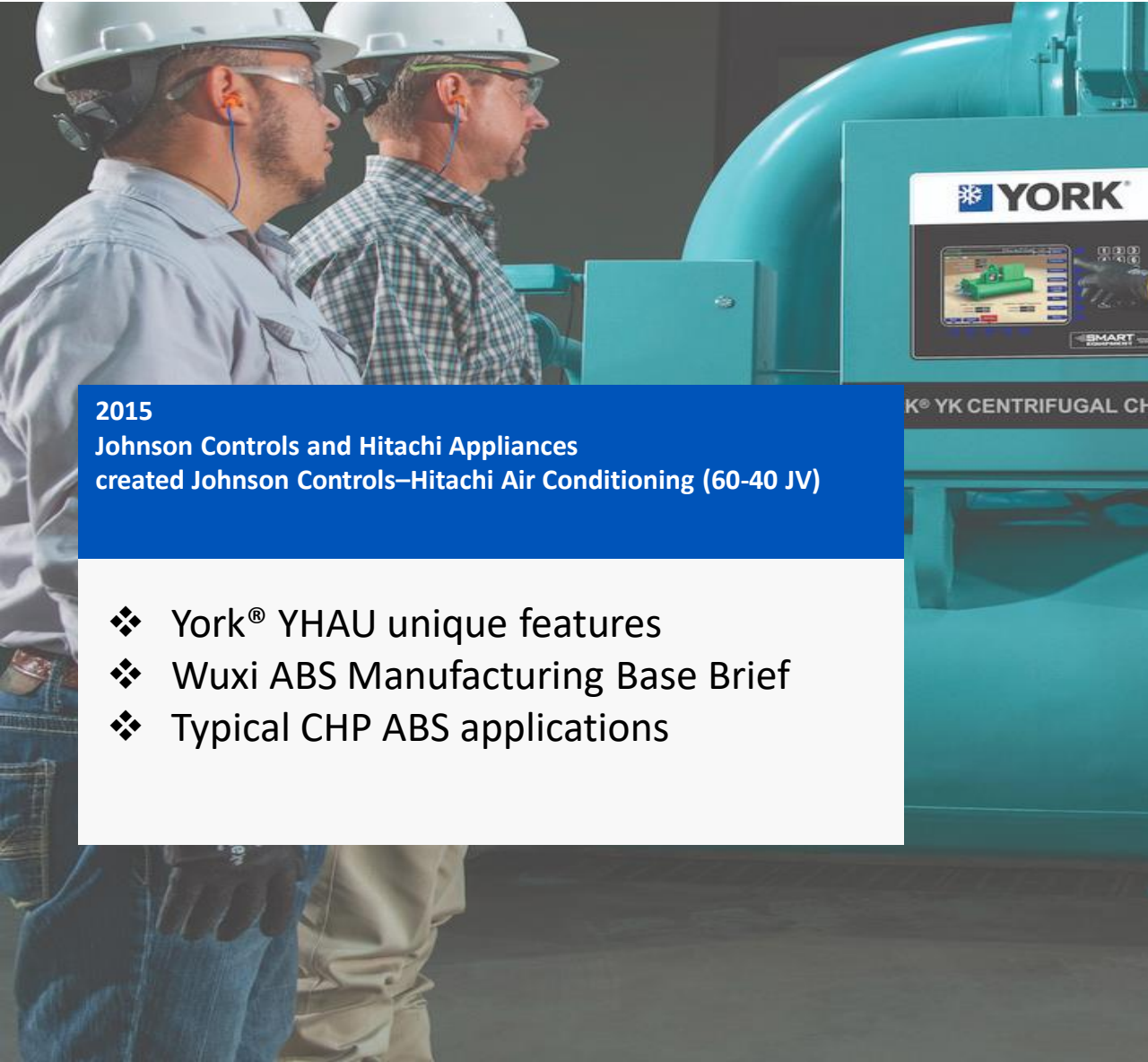


BUSINESS ASSOCIATES OF



- Sales of Vapor Absorption Chillers & Boilers.
- Sales of Waste Heat Recovery, Exhaust Gas Boiler (EGB)
- Boiler Economizer & Air Pre-Heater.
- Exhaust Damper, 3-Way Valves & Control Instrument For Automation.
- Low Voltage Items, Control Panel, Sub Station & Automation by PLC.
- Diesel Generators.





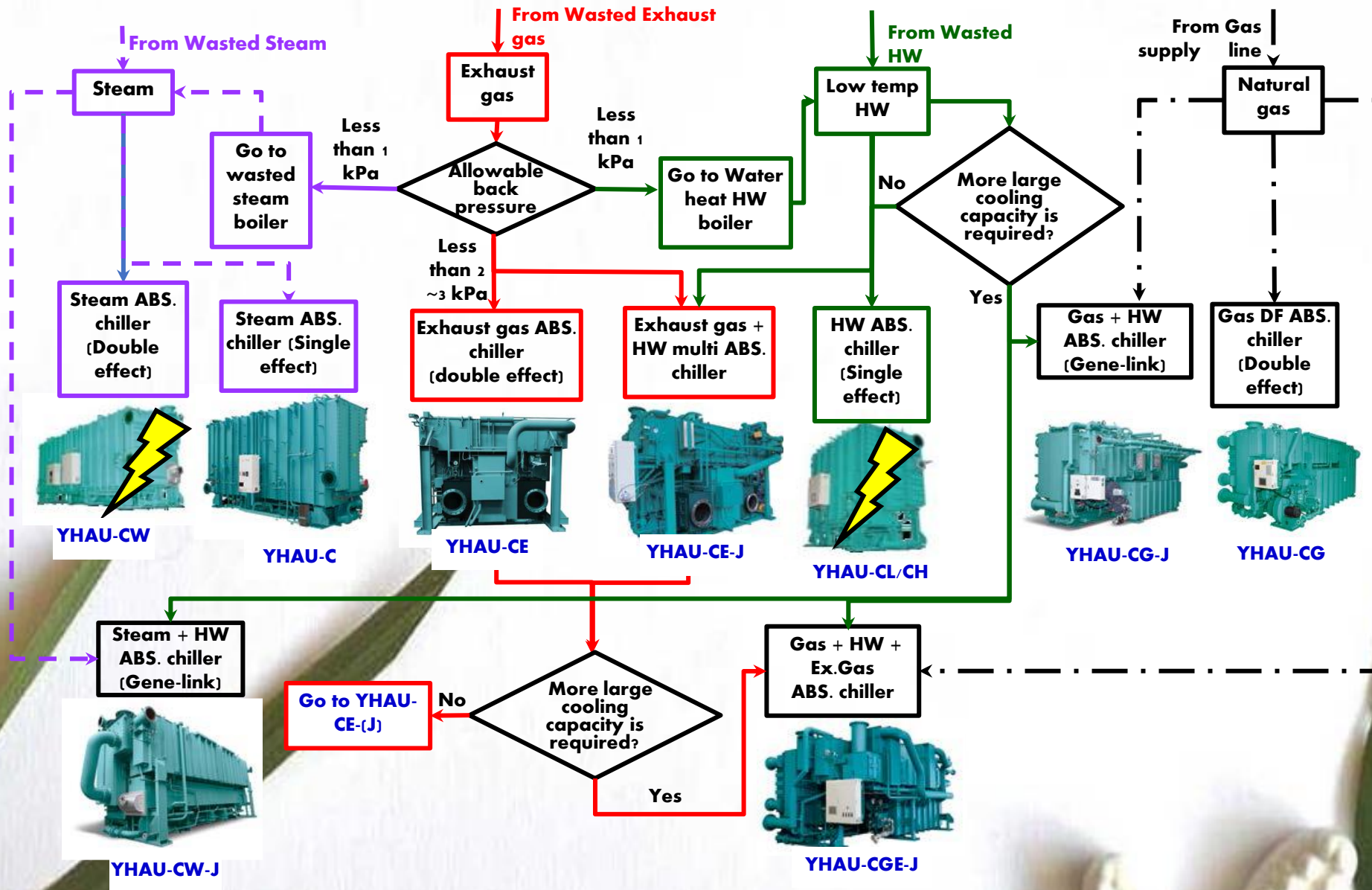
2015
Johnson Controls and Hitachi Appliances
created Johnson Controls–Hitachi Air Conditioning (60-40 JV)

- ❖ York® YHAU unique features
- ❖ Wuxi ABS Manufacturing Base Brief
- ❖ Typical CHP ABS applications

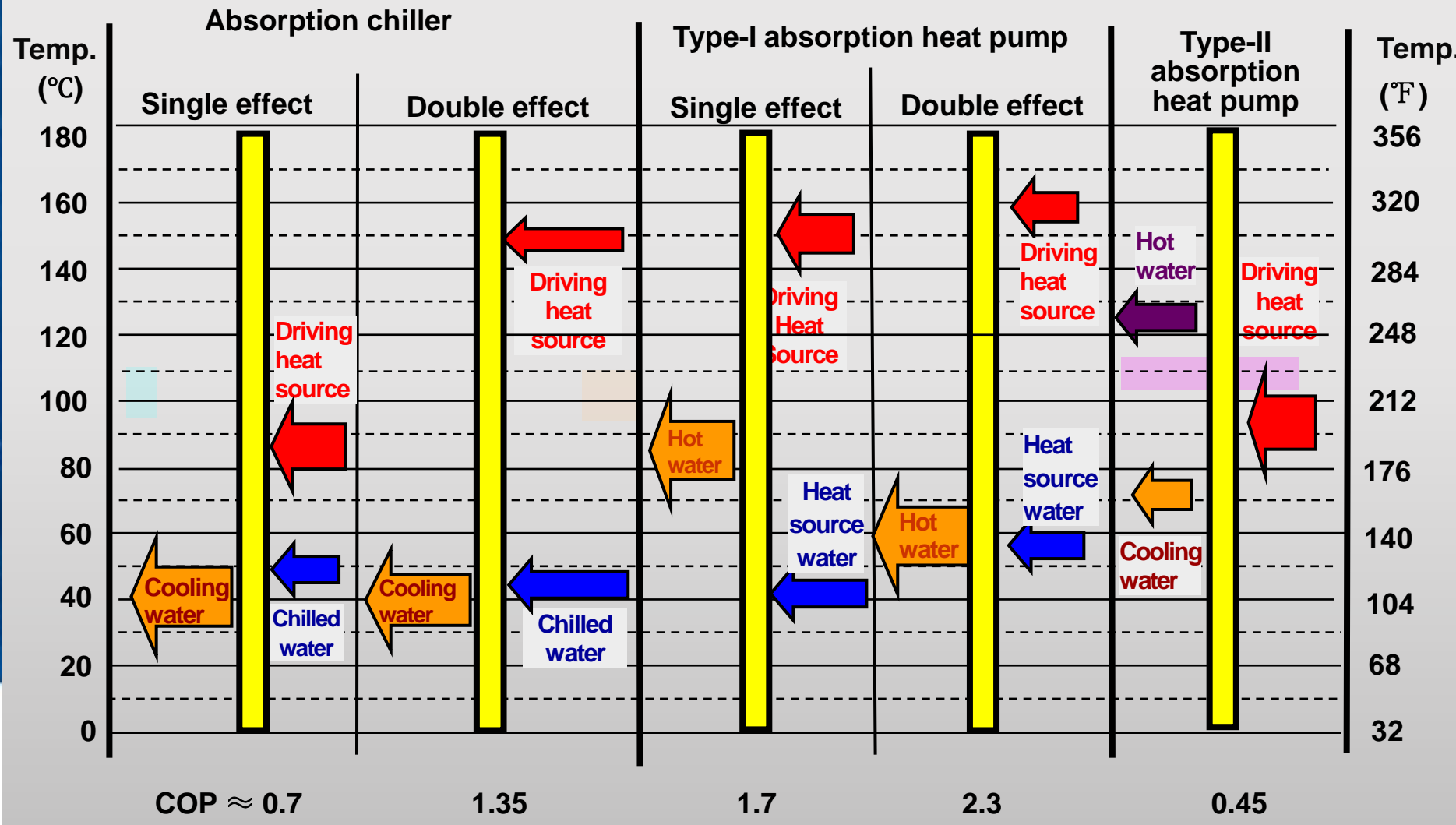
Largest and most experienced team for
absorption chillers in the world!

1. Parallel flow & 2 step E-A structure
2. Highly reliable high temperature generator and condensate heat exchanger
3. Falling film low temperature generator
4. Patented evaporator-absorber internal designs
5. Highly efficient and reliable plate heat exchangers
6. Proven auto-purging system
7. Intelligent PLC control system
8. Patented molybdate inhibitor + α additive

YORK CHP ABS Chiller Select Flow Chart

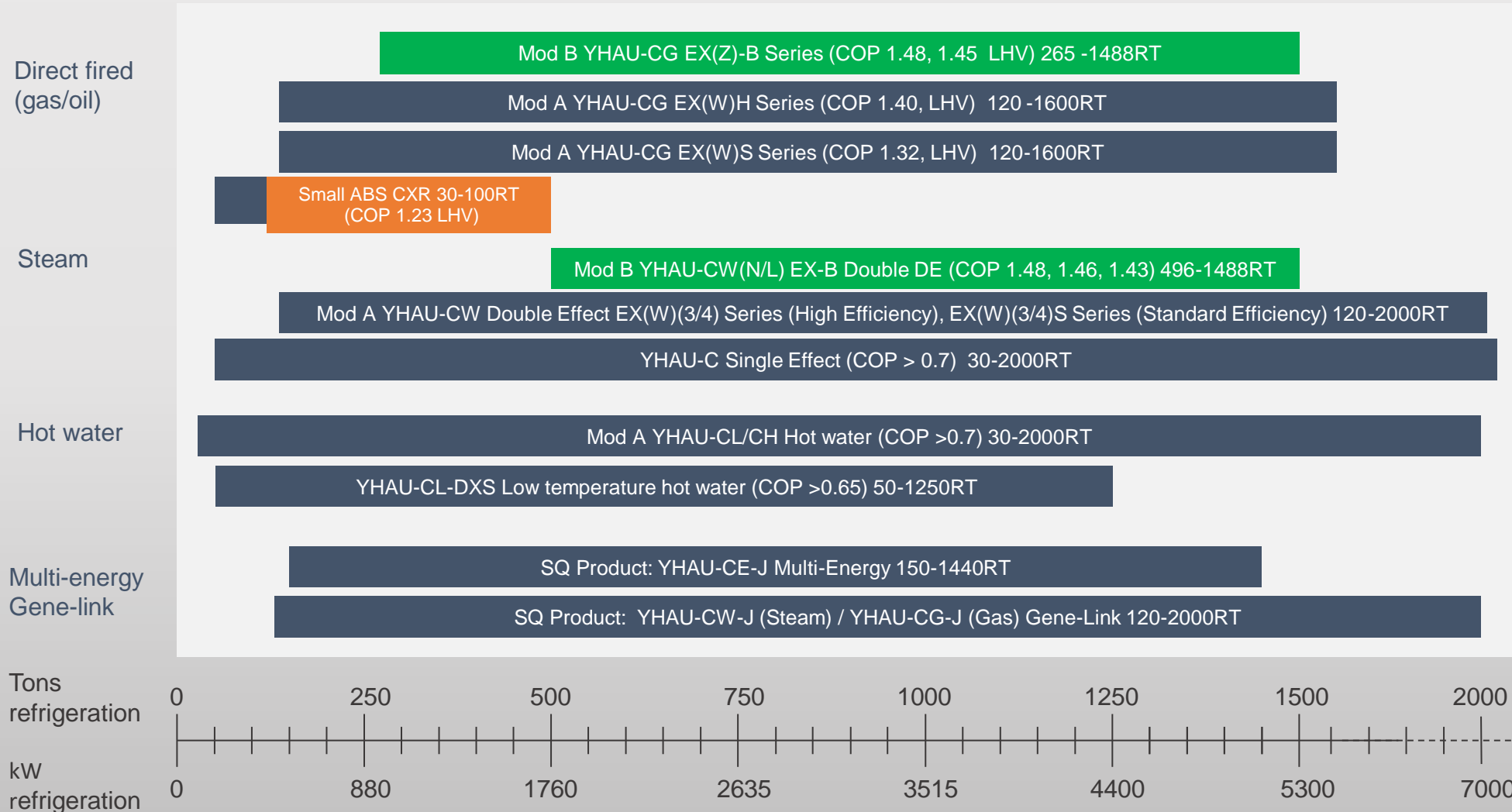


Comprehensive Absorption Chiller / Heat Pump Portfolio



YORK® YHAU Comprehensive unique product portfolio

30 – 2000 Tons, driven by gas /oil / steam / hot water / multi-energy



WASTE HEAT RECOVERY BOILER

Xinli Boiler could customize waste heat recovery boiler based on the actual situation.



Special Features

1. STABLE OPERATION
2. 8000HR RUN CONTINUOUSLY
3. 20 YEARS DESIGN LIFE
4. TEMPERATURE RISES RAPIDLY
5. GOOD INSULATION EFFECT
6. COMPACT STRUCTURE
7. SMALL FOOTPRINT
8. LARGE DIAMETER DRUM STEAM
9. STORAGE IS LARGE
10. THREADED PIPE
11. BIG SIZE CHAIN GRATE
12. USE LIGHT INSULATION MATERIAL

Capacity: **1t/h~75t/h**

Application: **Glass industry,
coking industry,
chemical industry, etc.**



- **MULTI-FUNCTION SAFETY PROTECTION DEVICE**

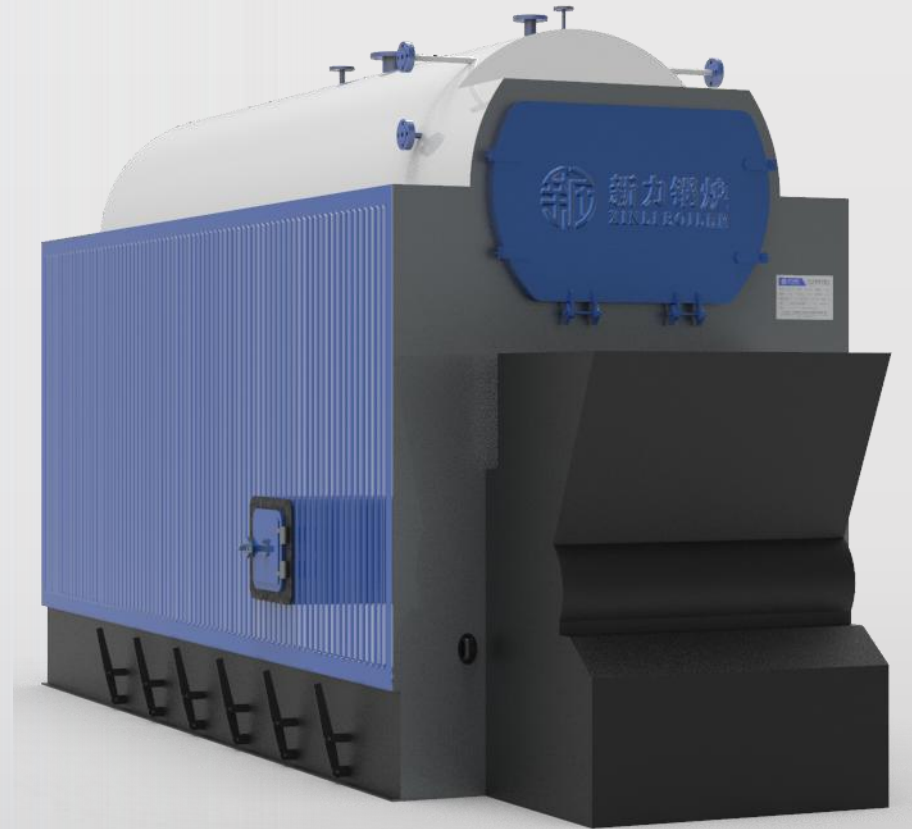
HIGH ENERGY, TO ENSURE THE BOILER OPERATE SAFETY AND EFFICIENTLY. IT HAS FUNCTION OF VIEW OF FIRE AND MAINTENANCE CHANNEL.

- **PERFECT INTERLOCK CONTROL**

PRECISION TEMPERATURE CONTROL, PRESSURE, AND TEMPERATURE SETTINGS OF MULTIPLE CONTROLS OVER PROTECTION WHICH ENSURE SAFE AND RELIABLE OPERATION

- **LEADING AUTOMATIC CONTROL**

ADOPT SIEMENS / WEST GERMAN ELEMENTS, RELIABLE PERFORMANCE. THREE TYPES: ORDINARY ONE & CHINESE AND ENGLISH MENU LCD & INTERACTIVE TOUCH SCREEN REMOTE CONTROL



GOOD MATERIAL QUALITY

For Each Batch Of Raw Materials Purchasing, Steel Manufacturers Are Required To Provide Raw Material Inspection Reports. Our Factory Will Carry Out Random Physical And Chemical Sampling Of Raw Materials

STRICT INSPECTION

100% Non Destructive Testing (NDT) Is Strictly Performed For Welding Of Pipes And Plates

STRONG OVERLOAD CAPACITY

Our Boiler Can Run For A Long Time Under 110% Load, Our Engineers Calculate The Boiler Heating Area According To The Low Heating Value Of Fuel, And Ensure That The Boiler Heating Area Arrangement Is Large Enough.

SAVING ENERGY

Large Size Corrugated Furnace And Threaded Pipe Are Used To Increase The Effective Travel And Residence Time Of Flue Gas By Three Pass, So As To Improve The Overall Efficiency And Achieve The Purpose Of Saving Energy.

RUNNING STABLY

Adopt Large Size Drum And Built-in Steam Separator To Ensure The Stability And Quality Of Steam Output.

LOW FAILURE RATE

So Far, This Type Of Boilers Have Been Installed Thousands Of Units Into The China & Oversea Market. The Technology And Design Are Very Mature. Under The Condition Of Correct Installation And Operation, The Failure Rate Is Very Low.



ÖZMAKSAN

Scotch Type Steam Boiler



- **Boiler guarantee of 2 years against manufacturing faults.**
- **Approved designs and quality accepted by European standards.**
- **All valves, instruments and fittings on the boiler are of European and Turkish origin.**
- **Designed on latest European standards that is EN 12953 with efficiency of 94-95 % with economizer.**
- **Most efficient Corrugated furnace design made of HII / DIN 17175 European Standards.**



ÖZMAKSAN



- Largest manufacturing capacity of Southeast Anatolia Region, Turkey.
- High Capacity Steam Boilers, Superheated Oil and Superheated Water Boilers, Hot Water Boilers.
- 14.000m² manufacturing establishment.
- Export 40 % of manufacturing to abroad: Syria, Iraq, Iran, Bulgaria, South Africa, Sudanese, Georgia, Moldavia, Libya, Lebanon, Cyprus, Fas, Tunisia, Algeria, Jordan, Egypt, Azerbaijan, Kazakhstan, Turkmenistan, Uzbekistan, Dubai, Italy.

Tranter, an American based global manufacturer of gasketed and welded plate heat exchangers provide maximum efficiency in transferring heat for a variety of applications

TYPE of PLATE

- *GC and GL Plates*
- *GX Ultra flex Plates*

Flow ranges: 0 – 4600 m³/h
Max work pressure: 25 bar
Temp. range: -40°C to +180°C
Connections: DN25 – DN500
Weld neck, flange or threaded

- ❑ **Gasketed Plate Heat Exchangers**
 - GD Double Wall Plates
 - GF Wide Gap Plates
 - GW Semi Welded Plates

- ❑ **Welded Heat Exchangers**
 - SUPERMAX
 - MAXCHANGER

- ❑ **Spiral Heat Exchanger**
 - ECONOCOIL
 - PLATECOIL

**Types of PHE
Tranter provide**

Customer List of Installation of PHE

- *Square Fashions Ltd.*
- *Badsah Textiles Ltd.*
- *Matin Spinning Mills Ltd.*
- *Bangladesh Steel Rolling Mills (BSRM)*
- *PHP Group*
- *SM Chemicals Ltd.*
- *Meghna Group.*
- *T.K. Group.*



A photograph of an industrial factory interior. The scene is dimly lit, with a prominent yellow light fixture in the upper left. The space is filled with complex machinery, including large pipes, metal railings with red and yellow handrails, and structural beams. A large, cylindrical object wrapped in silver insulation is visible on the left. The overall atmosphere is one of a busy, industrial environment.

THANK YOU